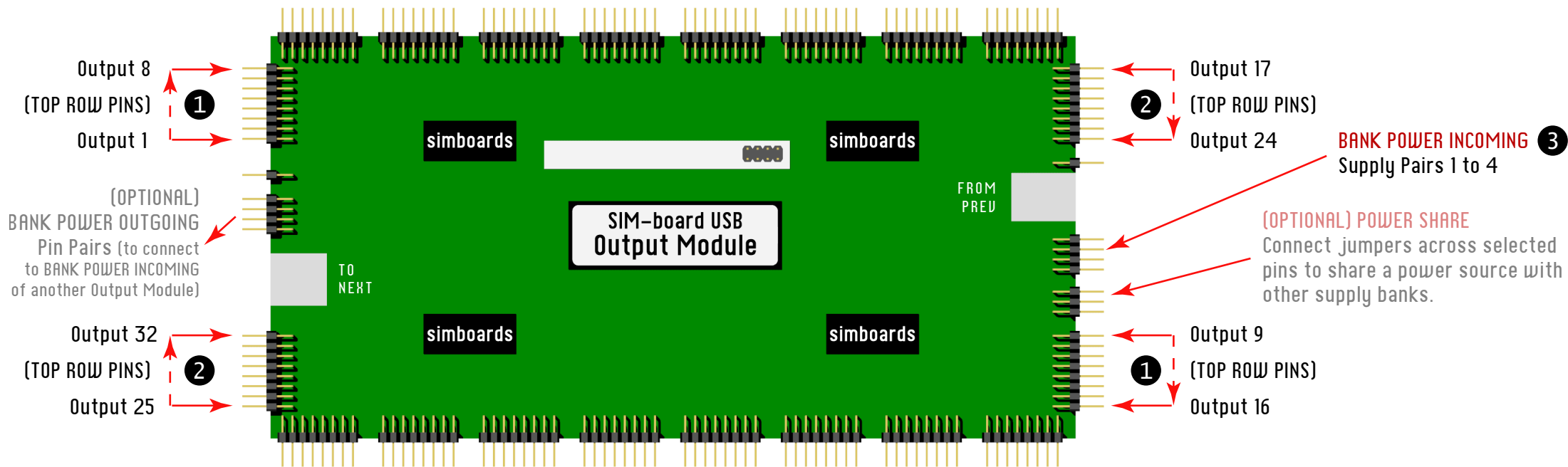


Output Module Direct Drive Connections

For 32 Node Direct Drive Modules



- ① Output node pins 1 to 16 are for the POSITIVE (+) connection of the output to be driven; the NEGATIVE (-) must be connected to the voltage source GROUND directly.
- ② Output node pins 17 to 32 are for the NEGATIVE (-) connection of the output to be driven; the POSITIVE (+) must be connected to the voltage source directly.
- ③ Nodes 1 to 8 are powered from the supply voltage connected to BANK PWR INCOMING pin pair 1; nodes 9 to 16 by pin pair 2; nodes 17 to 24 by pin pair 3; nodes 25 to 32 by pin pair 4. If the same voltage source is required to drive more than one bank, use the POWER SHARE pins to share the source across banks.

Detailed individual node connection guidance can be obtained from the SIM-board Universal Controller software floating information icon.